

# STUDENT RESOURCES

Field Trips are only one of the many ways students have an opportunity to explore Turtle Bay. The programs below include some of our educational and accessible programs with students and their families in mind.

## Access Programs

To provide greater access to all, Turtle Bay is proud to offer the following programs and discount days:

- **Turtle Bay for All**
  - EBT Card Holder Exclusive Offer
  - \$3 / person for up to 4 people!

*Presented by Drs. Promila & Paul Dhanuka & Family*
- **Sensory Hour**
  - FREE program for those with ASD or other sensory processing needs and their families. Pre-registration required, space is limited.
  - Visit [turtlebay.org/sensory-hour](http://turtlebay.org/sensory-hour) for more information

*Presented by Betty Fitzpatrick*
- **Test Drive Turtle Bay**
  - Check out a pass at Shasta Public Libraries! Free Admission for 2 Adults & 4 Kids for 7 days.

*Sherrill Bambauer Presents*

## Little Explorers

Thursdays, 10:00 - 11:00 AM

### Paul Bunyan's Forest Camp at Turtle Bay

Little Explorers aims to provide an exemplary, developmentally age-appropriate early childhood program for children ages 5 and under and families. We work to create a learning environment that models best practices for high-quality early education experiences for young children, parents, and caregivers to observe and learn. Free for Turtle Bay Members and included in Park admission.

## Discovery Camps

School Breaks, Weekdays

9:00 AM - 4:00 PM

Turtle Bay Museum

Turtle Bay's Discovery Camps are an opportunity for 7 - 12-year-olds to participate in various science activities, crafts, games, and more! At Turtle Bay, we encourage interactivity and hands-on learning that builds on prior knowledge. Camps occur during school breaks and over the summer. Scholarships are available for summer camp, applications open in Spring 2024.

November 20 - 22, 2023 | December 26 - 29, 2023

January 2 - 5, 2024 | February 19 - 23, 2024

Summer 2024 | Dates Subject to Change

## PARK HOURS

September 5, 2023 – April 30, 2024

(Closed Mondays & Tuesdays)

Wednesdays – Fridays, 9:00 AM to 4:00 PM

Saturdays and Sundays, 10:00 AM to 4:00 PM

Beginning May 1, 2024

Mondays – Fridays, 9:00 AM to 5:00 PM

Saturdays and Sundays, 10:00 AM to 5:00 PM

Dates of Park closures are subject to change. Check [turtlebay.org](http://turtlebay.org) for current information.



presented by

 **tri counties bank**

Service With Solutions®

# SCHOOL FIELD TRIPS & RESOURCES

2023-2024



**TURTLE BAY  
EXPLORATION PARK®**

*Wonder-Full™*



# TURTLE BAY FIELD TRIP OPTIONS

State Content Standards for all grades and programs are reinforced. We strive to take students beyond the standards, knowing that life far exceeds the reach of these important benchmarks. When booking a field trip, you can choose from a variety of Animal, Garden, and Exploration Classes, or you can create your own Park experience through Independent Exploration. For our Field Trip Planning Guide and other resources, please visit [www.turtlebay.org/field-trips](http://www.turtlebay.org/field-trips)

## INDEPENDENT EXPLORATION

### Available year-round!

Explore the galleries and grounds, Museum, Paul Bunyan's Forest Camp, the Gardens, and Sundial Bridge in small, chaperone-led groups. Engage your students with the many animals in our live animal collection. Explore all the connections to the natural world by visiting our botanical gardens. Discover the people who have called - and still call - this region their home. Visit our two changing exhibit galleries to see temporary exhibitions. If your class uses science journals, bring them on your field trip! Turtle Bay is the perfect place to observe, record, and reflect on our natural world!

## EXPLORATION CLASSES

September 6, 2023 – April 26, 2024

Wednesdays - Fridays, 9:15 AM - 12:00 PM

Turtle Bay Educator-led Exploration Classes offer interactive, informational, and inspirational experiences. These classes provide opportunities to practice, build on, and connect with Next Generation Science and other standards. Classes are 45 - 60 minutes long and your group may stay and enjoy the rest of the Park before or after your class. Supplemental activities for before or after your class are available for most class topics.

*A minimum of 10 students is required for an Exploration Class.*

*The Maximum capacity is 30 students per class rotation; maximum of three class rotations per day. Additional \$1.00 per student.*

### Science Investigations

Grades: K-2nd & 3rd-5th

Discover the scientific method and sharpen your observational skills in this exciting and hands-on class. Younger students will investigate the states of matter and conduct experiments to build on their understanding of why matter really matters. Older students will observe and predict the surprising properties of everyday materials.

### Life Cycles

Grades: TK-K & 1st-2nd

Ladybugs & butterflies go through BIG changes! Younger students will hear a story and then get a chance to explore activities that showcase everyone's favorite insects. Older students will be learning all about metamorphosis through more animal examples and a fun game! *March & April dates only.*

### Exploring the Forest

Grades: K-3rd & 4th-6th

Uncover the stories that trees can tell us through their lifetimes and explore how important these organisms are in our world. Students will investigate the structures and functions of trees and discover the secrets hidden in tree rings.



### Wintu Ways

Grades: 2nd-6th

Did you know that Turtle Bay sits on what was once Wintu territory? Sit in the replica Wintu bark house and discover how the Wintu used natural materials for shelter, food, and tools and learn how they continue to use these materials for baskets, regalia, and more, today. *Activity contains pine nuts, alternative available upon request.*

### Aqua Ecology

Grades: 2nd-6th

Students will conduct a simulated bio-assessment of a stream by sampling aquatic macroinvertebrates. By learning the process by which macroinvertebrates are assessed, results are recorded and pollution tolerance indexes are determined.

### Earth Rocks!

Grades: 3rd-4th

Students will become active participants in the rock cycle as they explore the different processes and forces behind each step. This class includes examples of rocks and sediments for students to analyze and identify.

### Engineering Design

Grades: 3rd-6th

Design, build, test, and redesign! Students will get a glimpse at the design thinking process and apply their knowledge as they work in small teams to make a solar shield model for the James Webb Space Telescope.

## ANIMAL CLASSES

These popular Animal Classes are available in-person and virtually! Each class is interactive, contains live animals, and is tailored to fit the NGSS content for each grade listed. All classes are one hour long (40 min & 15 min Q&A) and your group may stay and enjoy the rest of the Park before or after your class.

**In-person: Fridays at 10:00 AM**

**October 13, 2023 - February 9, 2024**

*The maximum capacity is 75 students per class rotation; maximum of two class rotations per day. Additional \$2.00 per person. This fee applies to students, siblings, Turtle Bay Members, and chaperones. A minimum of 1 chaperone per 8 students is required to attend class. Teachers are free.*

**Virtual: Reserve by calling 530-242-3164**

*Virtual classes are live web programs for students to view in the classroom or at home. Virtual Animal Classes are \$150 per class; maximum of 40 students per class. Class is delivered via Zoom or your preferred virtual application.*



### Plant Adaptations

Grades: K-4th

Plant adaptations help plants grow in various climates. These genetic traits show up in leaf texture, seed dispersal methods and more. Find out what helps our local native plants thrive in our dry-summer climate by comparing those adaptations with plants from around the world as we walk through the gardens.

### Nocturnal Animals

Grades: 1st-3rd, 4th, 7th-8th

Nocturnal animals have unique adaptations to survive life in the dark. Whether an owl, snake or porcupine, these animals each have their own advanced senses that allow them to navigate their unique habitats.



### Forest Animals

Grades: K-3rd, 5th, 7th-8th

Forests cover only 30% of Earth's land area but are home to more animals than any other ecosystem. Surviving life in the forest requires a variety of different strategies and adaptations.

### Birds

Grades: 1st-8th

While all birds have wings and feathers - from the smallest parrot to the largest raptor - birds are an extremely diverse group of animals with unique traits. From pollinators to predators and seed spreaders to scavengers, learn how birds fill many functions in an ecosystem and the effects they have on the food chain.

### Reptiles

Grades: 1st-8th

Learn what it really means to be cold-blooded! Whether a hard-shelled turtle or a snake with no legs, reptiles have many diverse characteristics that allow them to live in all types of habitats. Explore the many different senses that allow these ancient animals to find food, shelter, and mates.

## CLASSES IN THE GARDENS

February 1 - April 25, 2024

Wednesdays and Thursdays at 10:00 AM

Explore the plants, trees, and other features of our Botanical Gardens with one of our horticulture specialists. All classes are one hour long and your group may stay and enjoy the rest of the Park before or after your class.

*Maximum of 30 students per class; maximum of two class rotations per day. Additional \$1.00 per student. Check-in at Museum Entrance. Classes are held outdoors in our Botanical Gardens, rain or shine.*

### Plant Life Cycles

Grades: K-4th

From seed to decomposition, plants provide food, oxygen, habitat for animals and insects, wood for our homes, fiber for our clothes, many medicines for illnesses, and then break down and return to enrich the soil for more generations of plants and for soil microbiota.





# PARK FAVORITES

## The Museum

Open Year-Round!

Turtle Bay's Museum is where art, science, history, forestry, and horticulture meet with permanent exhibitions about our region and changing exhibitions from around the world. Venture through our dark cave and learn about the Shasta Caverns. Then, continue on to visit the 22,000 gallon Visible River Aquarium, home to our beaver, ducks, and fish. Stop by the Resource Gallery and Wintu barkhouse to explore how people have lived in this area for millennia. The Museum is home to both historical artifacts and hands-on exhibits.



## Parrot Playhouse

Open Year-Round!

Brief Closure 11:45 AM - 1:00 PM

Walk through the interactive aviary featuring lorikeets, Australian birds seen in every color of the rainbow! Feed these colorful birds from your own hand! Free access, optional feeding is \$2 for each nectar cup. Cups may be purchased by cash or card at the aviary or by purchase order or check at the front desk for groups only.

Feed the parrots for \$2/person



## Babe's Corral

Open Year-Round!

Play structure for younger students

Babe's Corral includes a variety of play structures designed for young students, all of which are completely fenced to divide this safe area for little ones from the larger Forest Camp where older children are at play. This play area includes a balance log, ADA accessible nest swing, Osprey nest with slide, par course designed to support muscle growth and confidence, and talk tube.



## Museum Store

Inside the Museum Now!

Need a souvenir from your visit? Or maybe a unique gift idea for someone special to you? Our fabulously curated Museum Store has you covered! Just make sure that any students are supervised as they browse through the shelves and pick out favorites.

Need Solar Eclipse Glasses for Your Class? The Museum Store Has You Covered!



US Bank presents

## Forest Adventure

Open Year-Round!

Play structure for students 7+

Turtle Bay's Forest Adventure playground is designed to be a fun and adventurous experience for students that mimics the forestry experience. Kids can climb a large tower for a bird's eye view of the Park, similar to one shared from fire lookouts and by loggers who scale trees; or slide down a long and low zip line, reminiscent of logging arch pulleys. The playground also features swings, a large rock wall, super slide and more.

Presented by The K. Maurice & Marianne Johannessen Foundation

## Walk on the Wild Side Animal Show

May 18 – August 11, 2024

Tuesdays - Sundays, 11:00 AM and noon

(No shows on Tuesday, May 28, 2024)

See an entirely new, live animal show! Enjoy watching a badger dig, a bobcat jump, and an owl fly inches from your head. Marvel as a curious corvid shows off intelligence by solving puzzles. See the animals up close and personal. Join us for a fun-filled educational wildlife show, and see animals showing off their natural behaviors in a captivating and inspiring atmosphere. This show is one that you won't soon forget. No late seating, shows last approximately 30 minutes.



# SPECIAL EXHIBITIONS

The Fitzpatrick Exploration Hall and Art Gallery host exhibitions both from our own collection and from around the world! There's always something new to see. All exhibitions and dates are subject to change, please call 530-242-3108 to verify. Admission to exhibitions and daily park programs are included with all in-person field trips.

Carolina Girimonte in Memory of Nick L & Claudia Girimonte presents

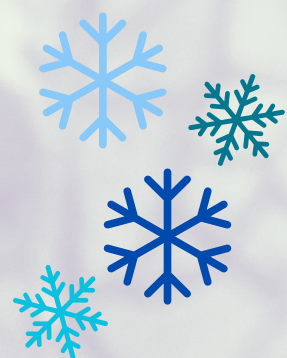
## Snow: Tiny Crystals, Global Impact

September 16, 2023 - December 31, 2023

Art Gallery

Snow is a key to life. This hands-on science exhibition is about the nature and wonder of snow and the impact of climate change on our snowy planet. Students explore how snow shapes and sustains life on Earth, snow's vital roles in sustaining our water supply and cooling our planet, and the cultural and personal value of snow. Snow was developed and produced by OMSI as part of a collaborative project led by the University of Alaska Fairbanks and funded by the National Science Foundation.

Supported by Frozen Gourmet, Inc.



Dr. Eric & Tiffany Blasingame and The Salter Families present:

## AI: Your Mind & The Machine

September 23, 2023 - January 7, 2024

Fitzpatrick Exploration Hall

Wondering what's up with ChatGPT? Want to know how your smart thermostat has learned your daily routine? This timely exhibition from The Relayer Group takes a deep dive into Artificial Intelligence and demonstrates how AI is relevant to our lives right now. This exhibition is the perfect STEAM experience to introduce students to this growing technology and to peek into how our brains and AI will work together in the future.

## Amazing Pollinators

January 20, 2024 - May 27, 2024

Fitzpatrick Exploration Hall & Art Gallery

This visually-stunning, game-based, role-play adventure immerses both older and younger students in the colorful and diverse world of pollinator/plant relationships. Developed by Minotaur Mazes, in collaboration with the Florida Museum of Natural History and the Xerces Society for Invertebrate Conservation, Amazing Pollinators explores Life Science concepts, including plant and animal adaptations, interdependence of organisms, structure and function of body parts, habitats, and plant life cycles and reproductions. It also touches on Earth and Space Science standards in biodiversity and human influence.



## Famous Artists Children's Art Exhibition

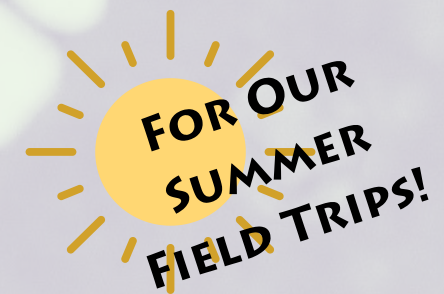
January 24, 2024 - April 28, 2024

Main Museum Gallery

Enjoy an exhibition of works created by students in the Famous Artists Portfolio art education program. Participants of the program may submit artworks for this special exhibition. To learn more about this free program, check out our Educator Resources section in this brochure.



Look under Teacher Resources to find out how your class can enter!



## Expedition Dinosaur: Rise of the Mammals

June 7, 2024 - September 2, 2024



# FIELD TRIP INFORMATION

Consider the following to learn about field trip reservations, expectations, and other important information:

- **Book your field trip early! Classes fill to capacity and there is a limit to daily field trip admissions to the Park. Spring dates fill very quickly.**
- **Request your reservation at least two weeks in advance by filling out a Field Trip Request Form at [turtlebay.org/school-field-trips](http://turtlebay.org/school-field-trips). If either of your preferred dates and times is available, Turtle Bay staff will follow up to confirm your reservation. If unavailable, a choice of alternative dates and times will be provided.**
- **Once your reservation has been confirmed, all teachers must submit a signed Policy Agreement Form at least 10 days prior to your reservation.**
- **With less than 48 hours' notice, there will be a non-refundable \$50 charge for cancellations.**

## Payment

Payment for all in-person field trips is due upon arrival by cash, check, card, or Turtle Bay will invoice if provided with a purchase order. Payment for virtual classes is due at registration. **One transaction per reservation.**

## FIELD TRIP RATES

Teachers / Field Trip Leaders	Free
Students (& other children 4+)	\$6.00
Chaperones <i>Includes parents, volunteers, &amp; other school staff</i>	\$6.00
Turtle Bay Members <i>Must be named on membership - adults only, no additional guests</i>	Free
Exploration & Garden Classes	+ \$1.00 per student
Animal Classes <i>Applies to chaperones, siblings, members, and students; teachers are free</i>	+ \$2.00 per person
Nectar Cup <i>Optional</i>	+ \$2.00 each
Admission Stickers <i>Required for all individuals without a school sticker or equivalent (see under School Stickers section)</i>	+ \$0.50 each
Virtual Animal Class <i>For up to 40 students</i>	\$150.00

## Field Trip Guidelines

Teachers bringing their students to Turtle Bay Exploration Park are expected to plan a schedule that focuses students' attention.

Teachers and chaperones are expected to:

- Stay with pre-assigned chaperone-led groups at all times, regardless of the students' ages.
- Adhere to the code of conduct established by school systems. Behavior that is not acceptable at school is not acceptable at Turtle Bay Exploration Park. Please note: the Park is not responsible for lost, stolen, or damaged personal property.
- Act as facilitators, encourage inquiry, and assist students in navigating through the Park and programs safely and appropriately.

## Don't forget your School Stickers!

- School stickers, nametags with the school's name, are required for everyone in your group including all students and adults.
- Matching school or handcrafted t-shirts, visors, lanyards, wristbands, etc. with the school's name visible are also acceptable.
- You will be charged a fee of \$0.50 per person for all admission stickers provided by Turtle Bay.



## Chaperones are Required

Chaperones are responsible for the safety of students and the exhibits they visit. Please determine designated chaperones and chaperone-led groups before arrival and distribute a provided Chaperone Guide to all adults attending. Parents, volunteers, or other school staff are all considered chaperones. Please mention any one-on-one aides or translators attending and/or other special considerations for your field trip when booking.

**Minimum requirement of 1 chaperone per 8 students.  
Maximum of 1 chaperone per 2 students.**

*Only Turtle Bay Members named on their membership card are admitted for free. Memberships do not waive student or guest admission or other field trip fees.*

Special thanks to



**tri counties bank**  
Service With Solutions®

*for supporting the educational programs  
at Turtle Bay Exploration Park*

## PLAN YOUR VISIT

Here are some tips for helping your students have a successful and meaningful visit to the Park:

- Visit Before Your Trip! After reserving a field trip, teachers can come into the Park prior to their visit for FREE!
- Less Might be More. There is so much to explore at Turtle Bay. Prioritize a few things to really enjoy with your students.
- Create a Schedule. Some programs are time-sensitive and may interfere with your transportation or lunch plans. Check out our website for up-to-date information on our daily programs and exhibits.
- Check the Weather! Redding experiences both high and low temperatures throughout the school year. Most of the Park is outdoors so dress appropriately.

## DURING YOUR VISIT

### What to Expect

- Before your students may enter the Park, you or an appointed teacher/field trip leader must check in at the Museum Front Desk.
- Students, chaperones, other teachers, and school staff will be greeted by Turtle Bay Staff outside of the Park entrance with an orientation that covers behavioral expectations along with information regarding exhibits and programs.
- The check-in process takes approximately 15 minutes during our busier field trip seasons and for large groups so please plan accordingly. Missing school stickers, arriving late, or other unexpected circumstances will further delay check-in.
- Turtle Bay staff may take pictures and videos throughout the Park to develop our designs and programs. Such photos and videos may also be used in publications. Please advise us if you would prefer yourself or the children present not be photographed.

### Lunches

If your group decides to have lunch at the Park:

- Plan ahead and know if students are to carry their own lunches or if the group will pack all lunches together.
- Space is available to set lunches inside during Museum exploration. We highly recommend bringing wagons or rolling coolers to transport. Groups are responsible for transporting their own lunches during their visit.
- Help keep the Park clean by picking up anything left in your lunch area.
- No eating or drinking, with the exception of water, is allowed in the following areas:
  - All indoor spaces & buildings
  - Parrot Playhouse, Forest Camp
  - Amphitheater & Animal Show
- Pre-order to-go student lunches from the Branch House! Vegetarian and nut-free options available. \$5/student.



## EDUCATOR RESOURCES

Check out this year's opportunities for professional development, membership discounts, and resources available just for YOU. Turtle Bay's Professional Development Workshops & Lending Library were winners of the 7th Annual Superintendent's Award for Excellence in Museum Education!

### Lending Library

Turtle Bay's Lending Library offers classroom kits from various curriculum sources including GEMS (Great Explorations in Math & Science), Project Learning Tree, Growing Up Wild, and more. Lending Library subscribers may check out kits that come fully stocked with materials for a classroom of up to 32 students to implement the lesson plans. Activities are perfect for the classroom, afterschool programs, homeschools, or camps. Subscriptions are available for a yearly fee of \$40 and includes checking out an unlimited number of kits. Complete your registration form here: [www.turtlebay.org/lending-library](http://www.turtlebay.org/lending-library).



**Famous Artist Portfolio Program Orientation**  
Wednesday, September 20, 2023,  
4:00 – 5:00 PM  
Turtle Bay Museum  
Call 530-242-3148 or email [famousartists@turtlebay.org](mailto:famousartists@turtlebay.org) to register.

### Famous Artist Portfolio Program

This free program allows parents, teachers, and/or community members to present reproductions of significant artworks to students in the classroom. Portfolio prints are organized into nearly 70 age-appropriate themes. Follow-up art activities are suggested for each portfolio. No artistic experience is necessary—merely an enjoyment of working with children and a belief that art matters. In order to borrow portfolios, you must have completed training in a prior year OR participate in this year's program orientation. All K - 8th-grade students participating in this program are eligible to enter the 2024 Student Art Show, exhibited in Turtle Bay Museum from late January to late April 2024.

### Memberships for Teachers!

Visit the Park all year long with a Turtle Bay Membership! Teachers are eligible for a \$20 discount on any membership level. Members of Turtle Bay receive exclusive discounts on tickets to Redding Garden of Lights along with a 10% discount on purchases at the Museum Store, 10% discount at Mosaic Restaurant and Branch House Riverfront Bistro, and discounts for rooms at the Sheraton Redding. Call 530-242-3143 or email [membership@turtlebay.org](mailto:membership@turtlebay.org) for more information.



### Don't Miss Out!

Get updates on all our Park happenings and school programs. Join our quarterly educator newsletter, just for teachers! Learn more and subscribe at [turtlebay.org/field-trips](http://turtlebay.org/field-trips)